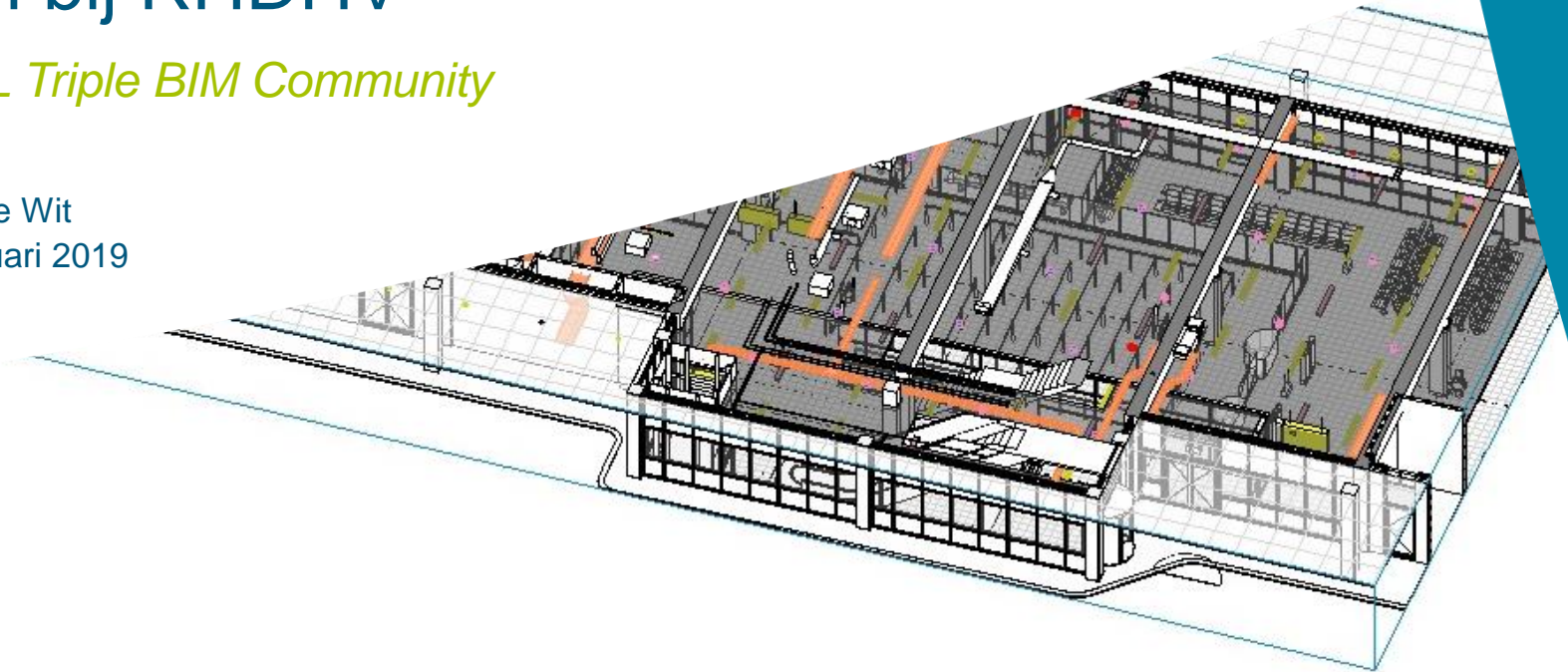


# BIM bij RHDHV

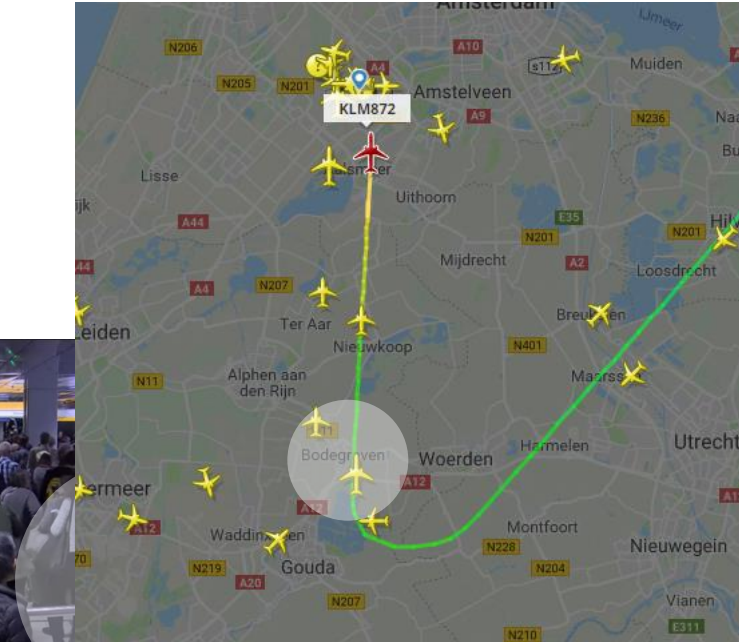
*TVVL Triple BIM Community*

M.C. de Wit  
17 januari 2019  
Open



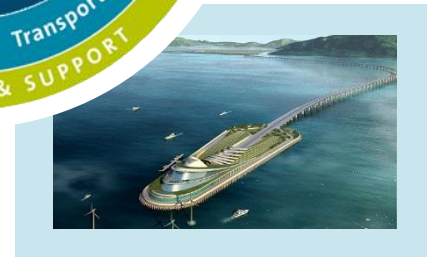
# Schiphol en ik

- Werktuigbouwkunde
- Sinds 2008 bij RHDHV
- BIM Lead installatietechniek



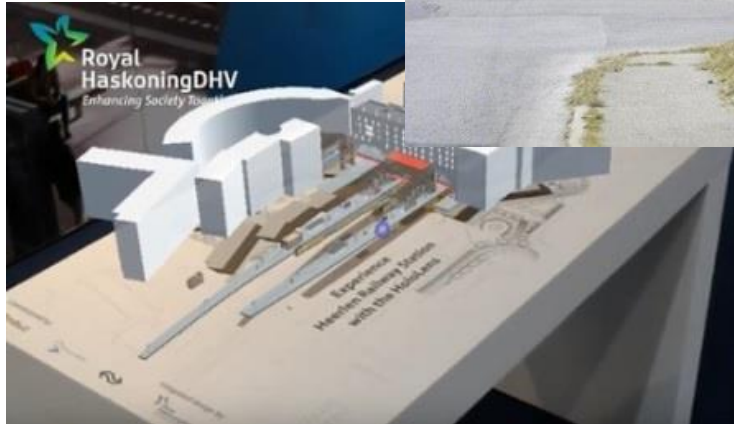
# Royal HaskoningDHV

- 6000 medewerkers
- 150 landen

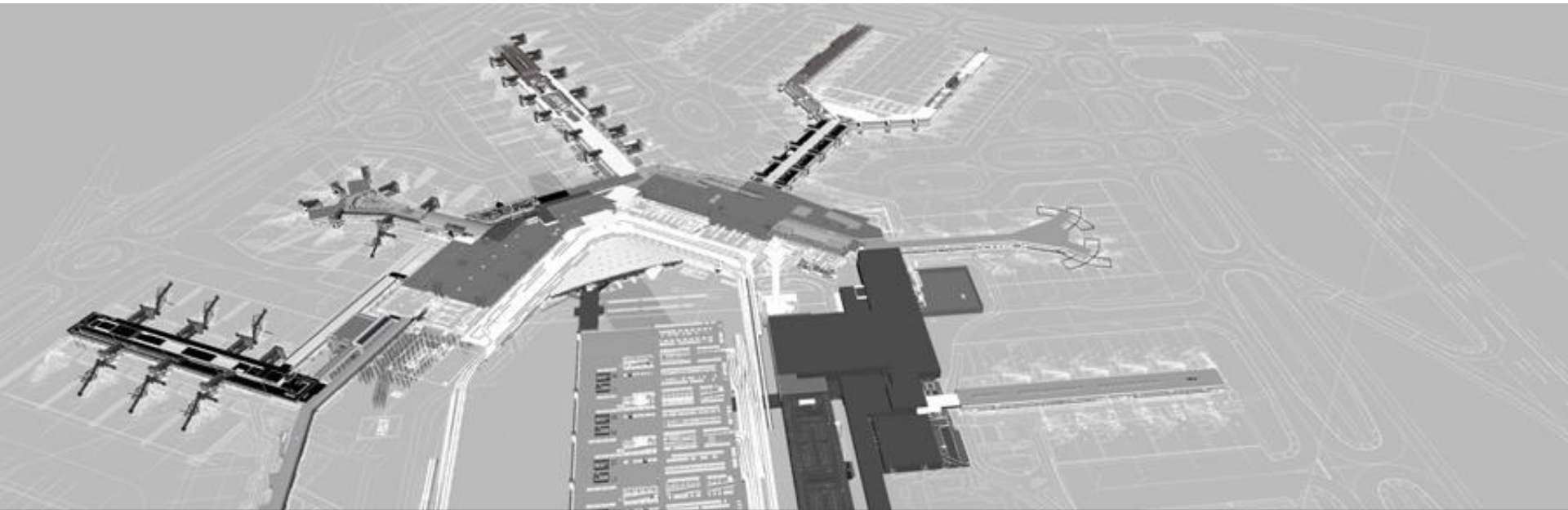


# VR en AR

- User experience
- Innovaties



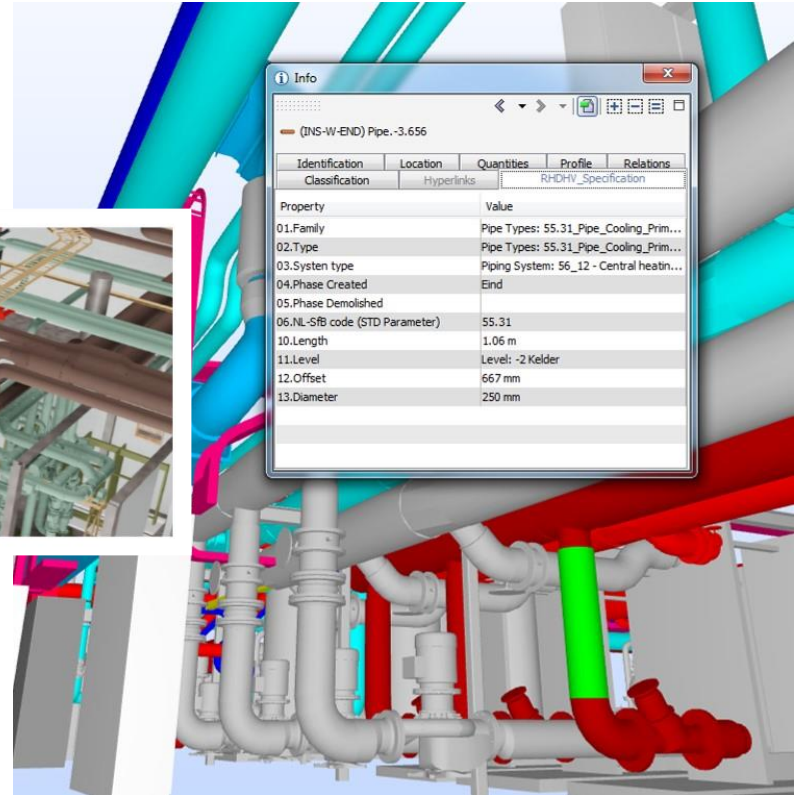
# Schiphol



*Sinds 2014  
Opzet diverse protocollen*

# Maakbaarheid aantonen

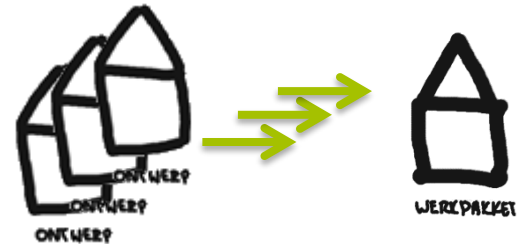
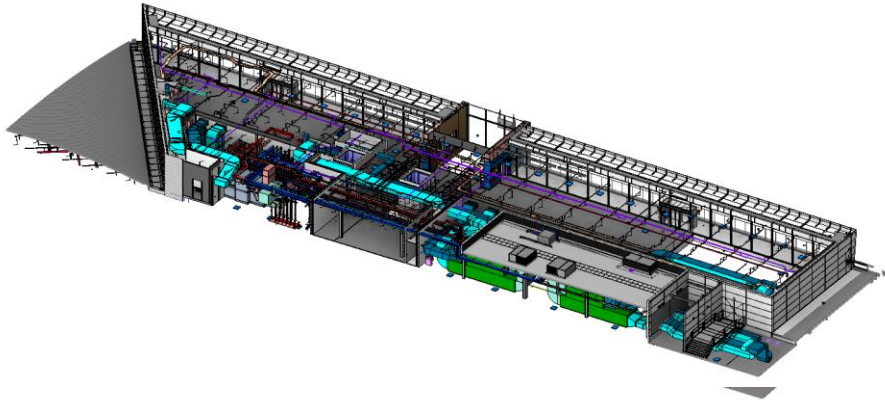
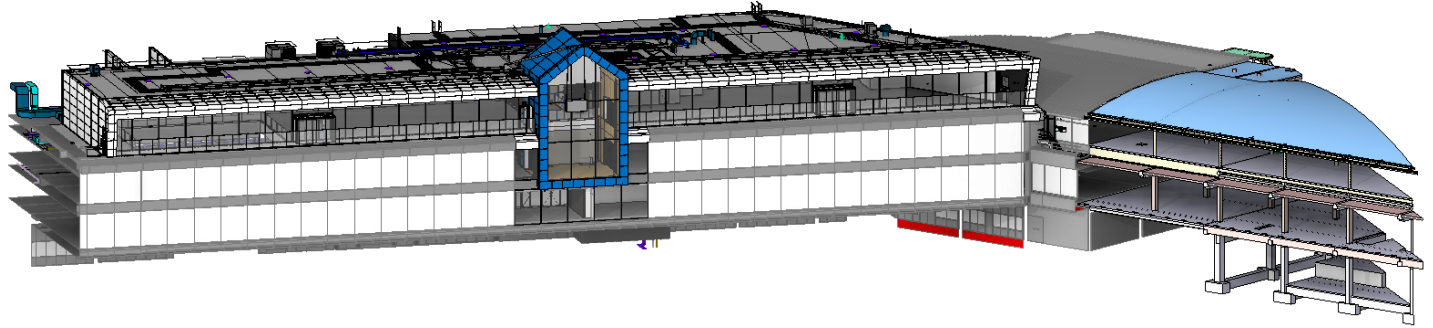
- Kracht Warmtestation Terminal 3
- Eerste aanbesteding met IFC



Proof

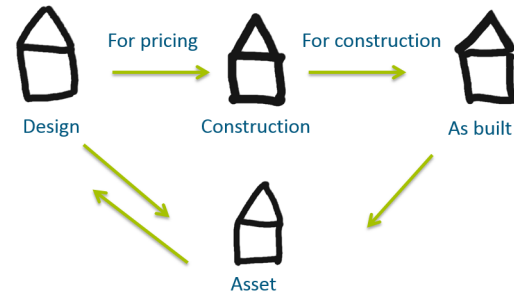
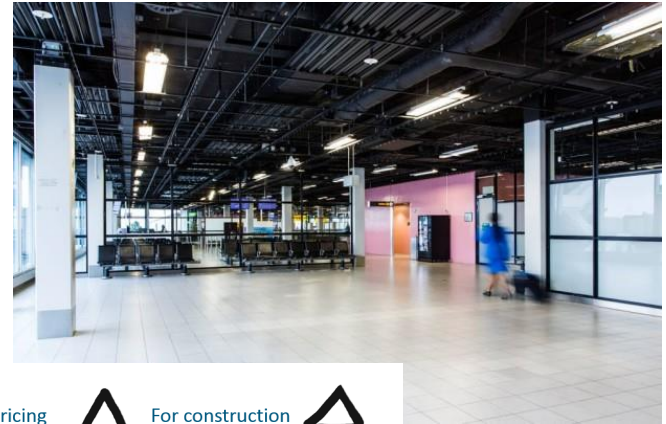
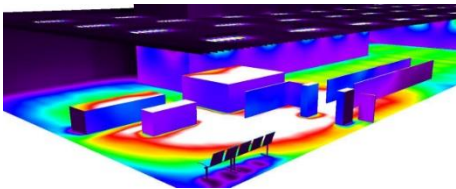
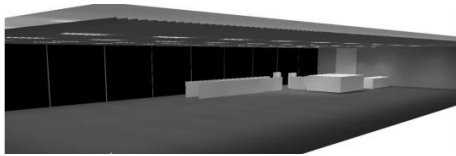


# Integraal ontwerpen



# Meer data beschikbaar

- Upgrade pieren
  - G pier als eerste integraal project in 2016
  - E pier werden modellen aangeleverd als 'as is'



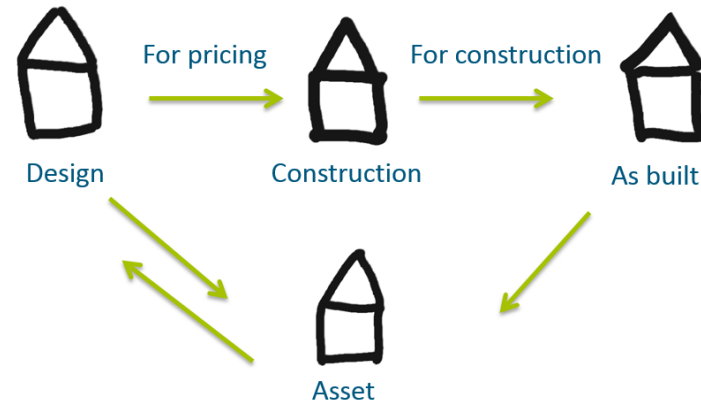
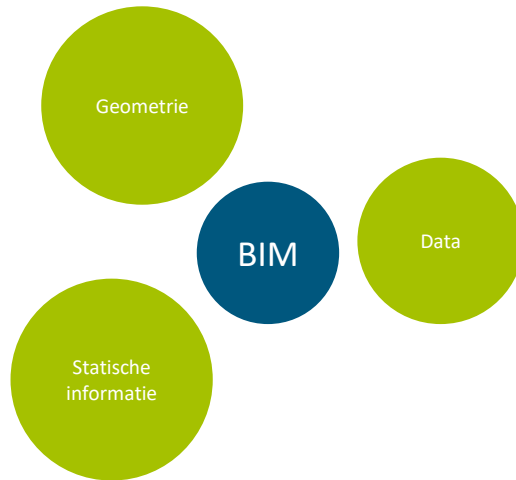


# Pointclouds en projectstart



# Proces

- IFC of Native?
- Informatie behoefte en levering?



# Projecten

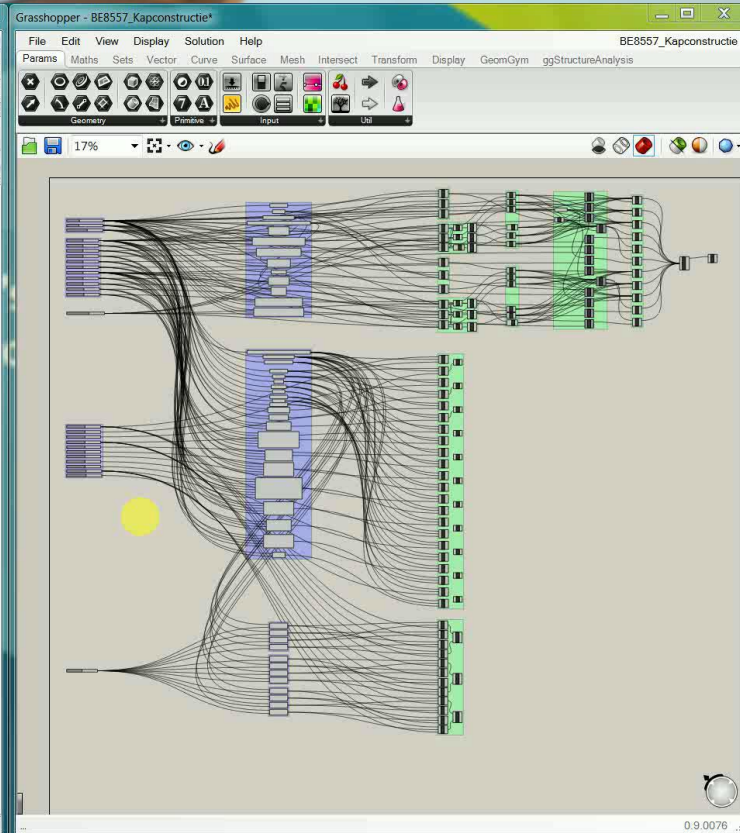
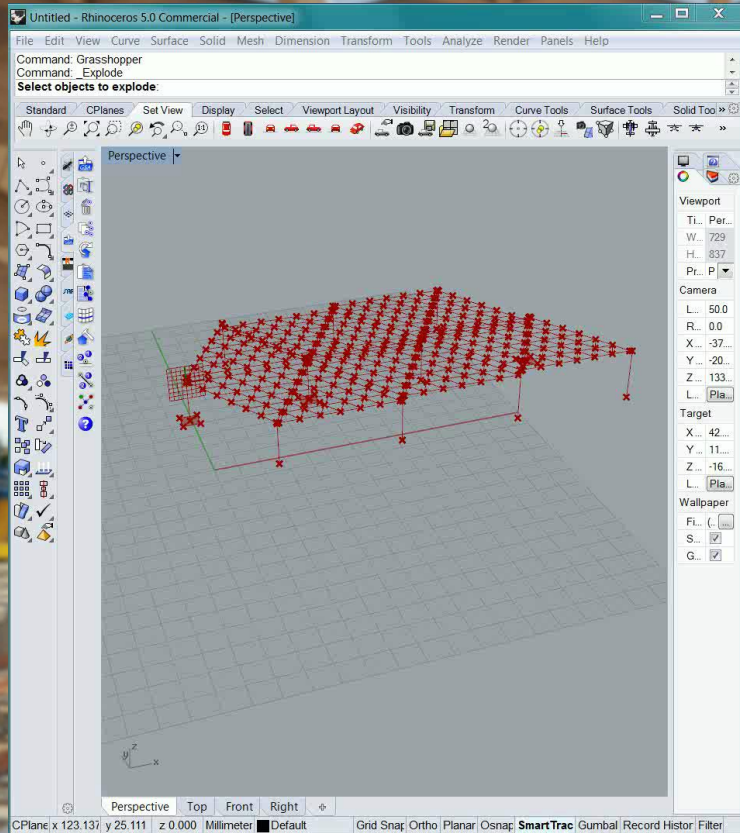


# Stations



*Nieuwbouw spoorzone Ede - Wageningen*

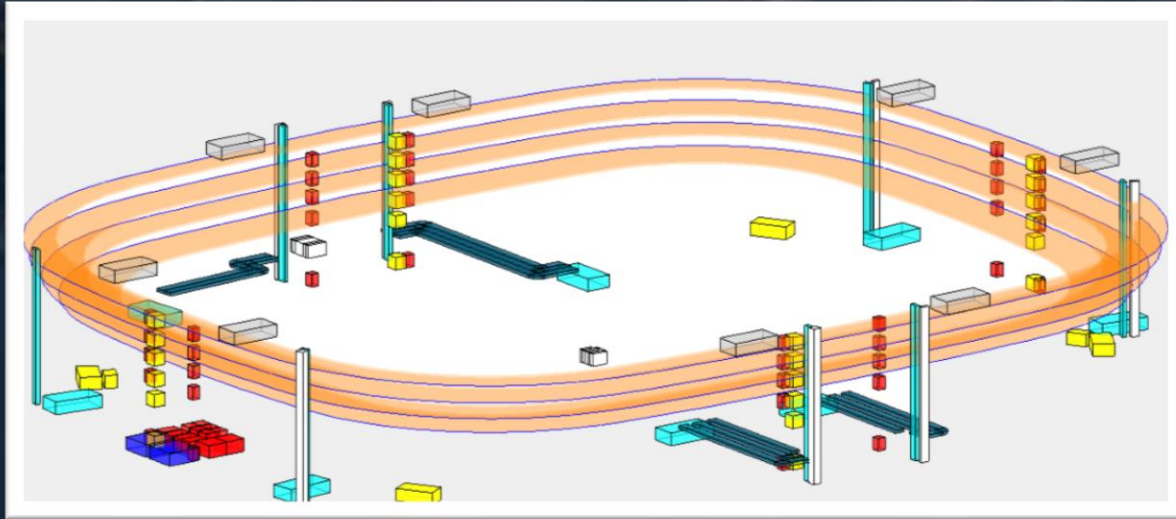
# > Parametrisch design



# Parametrisch ontwerp



*Masterplan Feijenoord City*



> *Parametrisch ontwerp met MEP?*

We look forward to working with you.

For more information visit our website  
[royalhaskoningdhv.com](http://royalhaskoningdhv.com)

Contact: [marco.de.wit@rhdhv.com](mailto:marco.de.wit@rhdhv.com)



[linkedin.com/in/marco-de-wit/rhdhv/](https://www.linkedin.com/in/marco-de-wit/rhdhv/)



[@RHDHV](https://twitter.com/RHDHV)



[facebook.com/RoyalHaskoningDHV](https://www.facebook.com/RoyalHaskoningDHV)